



PRODUCT SHEET

Snaregade Conference Table
by Norm Architects

Snaregade Conference Table

BY NORM ARCHITECTS

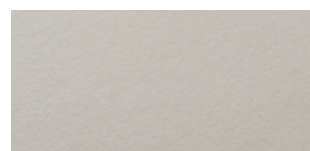
An elegant and minimalist design with a strong geometric presence, the Snaregade Dining Table is sleek enough to aesthetically elevate any space and durable enough for both commercial and private use. Efficient in its use of space, visually light and sophisticated, it is offered in a wide range of sizes and materials. The collection's round, oval and rectangular dark-stained oak tabletops have a warm, homely appeal and are now made purposeful as a WFH desk thanks to the addition of a cable tray to keep wires under control and declutter your workspace.

PRODUCT OPTIONS

TABLETOP



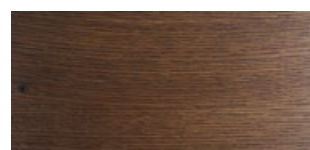
CHARCOAL LINOLEUM



MUSHROOM LINOLEUM



BLACK OAK



DARK STAINED OAK

POWDER COATED STEEL BASE



BLACK STEEL



LIGHT GREY STEEL

Snaregade Conference Table, Black Steel, Dark Stained Oak, by Norm Architects
Passage Stool, Natural Oak, by Krøyer-Sætter-Lassen
Reverse Table Lamp, by Aleksandar Lazic

Snaregade Conference Table

BY NORM ARCHITECTS

TECHNICAL SPECIFICATIONS

PRODUCT TYPE

Conference table

COLLI

1

ENVIRONMENT

Indoor

DIMENSIONS

H: 73 cm / 28,7"

D: 90 cm / 35,4"

L: 200 cm / 78,7"

PRODUCTION PROCESS

The tabletop is made from painted Crafted from FSC certified oak veneer, dark stained Crafted from FSC certified oak veneer or forbo linoleum glued on MDF, CNC machine-cut. The frame is welded together from steel tubes and surface finished with powder coating.

COLOUR

Base

Black (RAL 9005)

Light grey (RAL 9002)

Linoleum tabletop

Charcoal (Forbo) S 8502-B

Mushroom (Forbo) S 2002-Y

Wooden tabletop

Black (RAL 9005)

Dark stained oak

MATERIALS

Linoleum or painted oak veneer on MDF, and powder coated steel.

GLOSS

Gloss 10-20

WEIGHT

Tabletop: 33,8 kg / 74,5 lb

Legs: 16,9 kg / 37,3 lb

TEST

N / A

CERTIFICATIONS

TSCA title VI compliant

PACKAGING TYPE

Brown box

PACKAGING MEASUREMENTS (H x W x D)

H: 4,8 cm / 1,9" x W: 94 cm / 37" x D: 204 cm / 80,3"

MATERIALS & MAINTENANCE

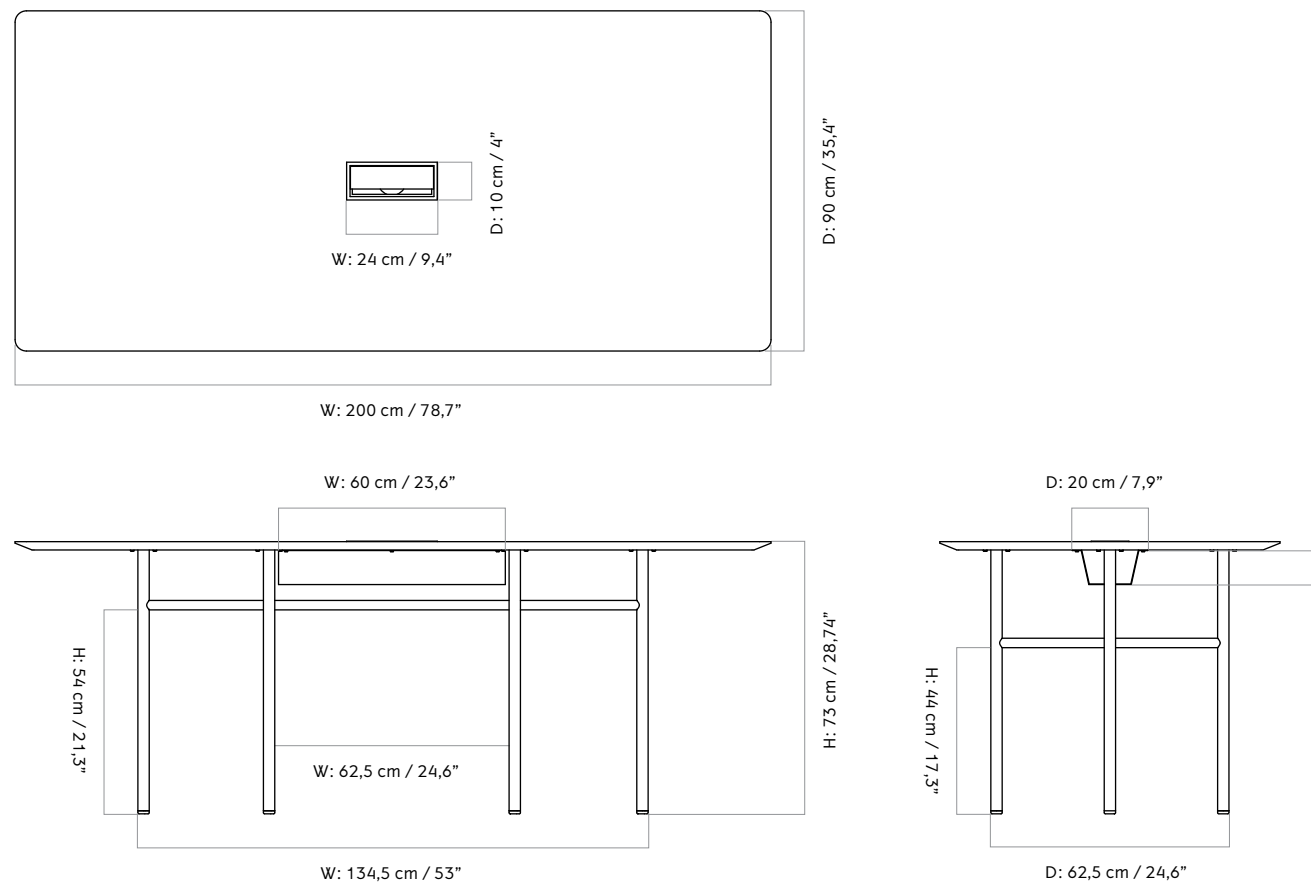
Please visit [menuspace.com](https://www.menuspace.com) for materials and care and maintenance instructions.



Snaregade Conference Table

BY NORM ARCHITECTS

TECHNICAL DRAWING

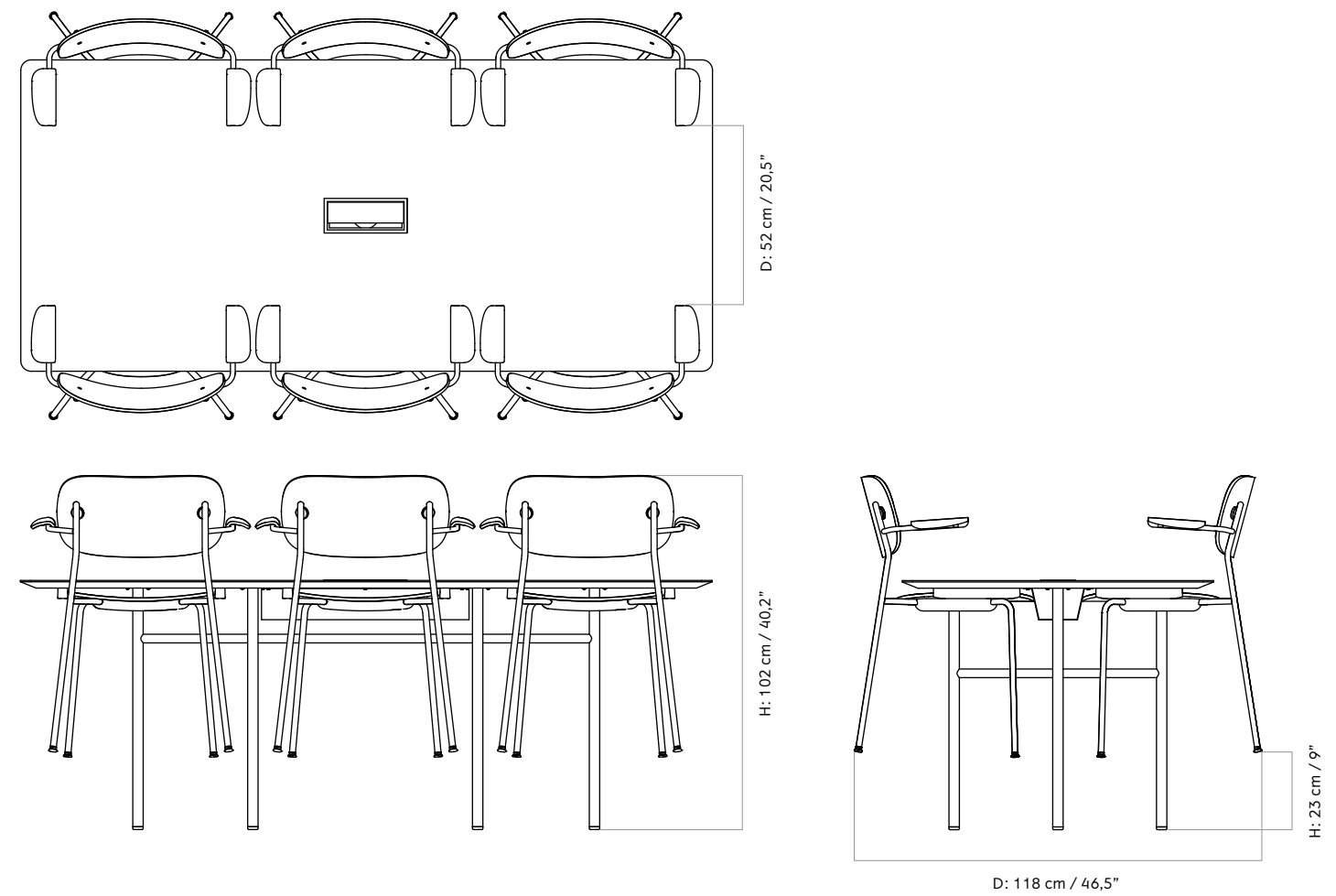


Snaregade Conference Table

BY NORM ARCHITECTS

TECHNICAL DRAWING

Snaregade Conference Table with Cable tray,
seat runner and Co Chair w/Armrest.



Snaregade Conference Table

BY NORM ARCHITECTS

TECHNICAL DRAWING

Snaregade Conference Table with Cable tray,
seat runner and Co Chair .

